



ministero delle
politiche agricole
alimentari e forestali

DEPARTMENT OF CENTRAL INSPECTORATE FOR FRAUD
REPRESSION AND QUALITY PROTECTION OF THE AGRI-
FOOD PRODUCTS AND FOODSTAFFS

ICQRF

WINE CELLAR ITALY

Update of 15th March 2020

**Wines, musts, GIs stocked in Italy by operators
obliged to keep the wine computerized register**

report no. 5/2020

published at the webpage: www.politicheagricole.it



Wine cellar Italy at 15th March 2020

The Report is drawn up by the ICQRF on data recorded in the wine computerized registers.

The database contains detailed information related to over **650 thousand wine vessels, 17,000 producers and records about 30 million wine operations annually**. ICQRF estimates that the database contains at least 95% of wine and must held in Italy.

On March 15, 2020, in Italian oenological premises, there were almost **56 million hectolitres of wine, 6.1 million hectolitres of must and 314,556 hectolitres of new wine still in fermentation**.

1. Summary

On March 15, 2020, in Italian oenological premises, there were almost 56 million hectolitres of wine, 6.1 million hectolitres of must and 314,556 hectolitres of new wine still in fermentation. On March 15, 2019, in Italian oenological premises, there were 57,538,379 hectolitres of wine, 6.9 million hectolitres of musts and 490,065 hectolitres of new wine still in fermentation.

More than 57% of wine in Italy is physically stocked in the northern regions. In Veneto, there is almost a quarter of the national wine, thanks to the significant contribution of stocks in the provinces of Treviso (10%) and Verona (9%). The two aforementioned provinces hold more wine (10.7 million hectolitres) than Puglia and Sicily together (9.7 million hectolitres).

The 51.3% of the wine in stock is PDO, with a prevalence of red (51.7%). 26.6% of wine is PGI, again with a prevalence of red (54.6%), while the varietal wines stocks represent just 1.3% of the total. The remaining 20,7% consists of other wines.

Despite the large number of GIs present (526), 10 names represent the 40.6% of the total GI wines stocks; the first 20 names represent more than half of the total GI (56.7%).

2. Wine stocked in Italy as of March 15, 2020

Table 1. Wine stocks in Italy by category and colour

WINES	hectolitres	%
PDO wines	28.658.082	51,3
<i>white</i>	13.373.940	23,9
<i>rosé</i>	456.348	0,8
<i>red</i>	14.827.794	26,5
PGI wines	14.879.153	26,6
<i>white</i>	6.176.404	11,1
<i>rosé</i>	579.036	1,0
<i>red</i>	8.123.712	14,5
Varietal wines	739.072	1,3
Other wines	11.590.411	20,7
ITALY	55.866.718	100

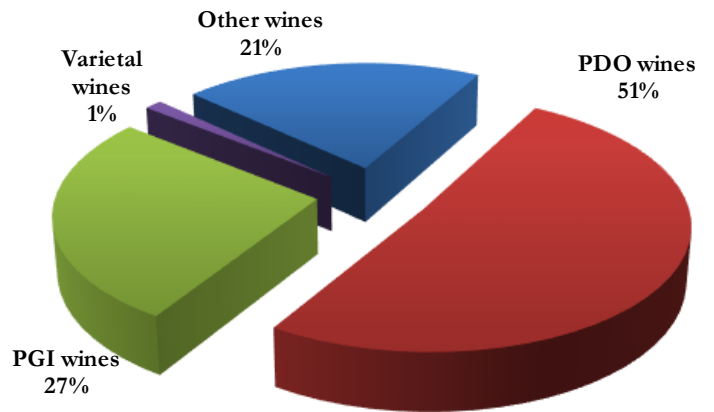
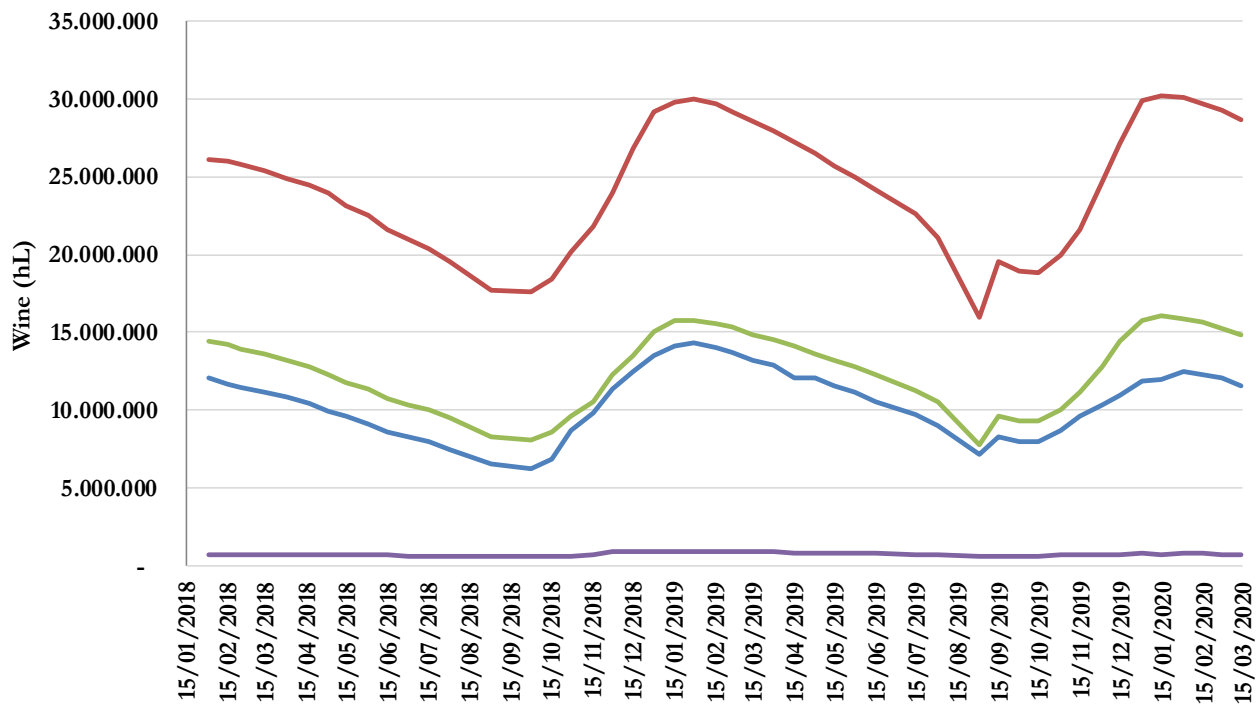


Figure 2. Trend of the wine stocks by category: 1 February 2018 – 15 March 2020



Where is physically stocked the wine in Italy?

More than 57% of wine in Italy is physically stocked in the northern regions. In Veneto, there is almost a quarter of the national wine, thanks to the significant contribution of stocks in the provinces of Treviso (10%) and Verona (9%). The two aforementioned provinces hold more wine (10.7 million hectolitres) than Puglia and Sicily together (9.7 million hectolitres).

Table 1. Wine stocks by Region and Geographical Area

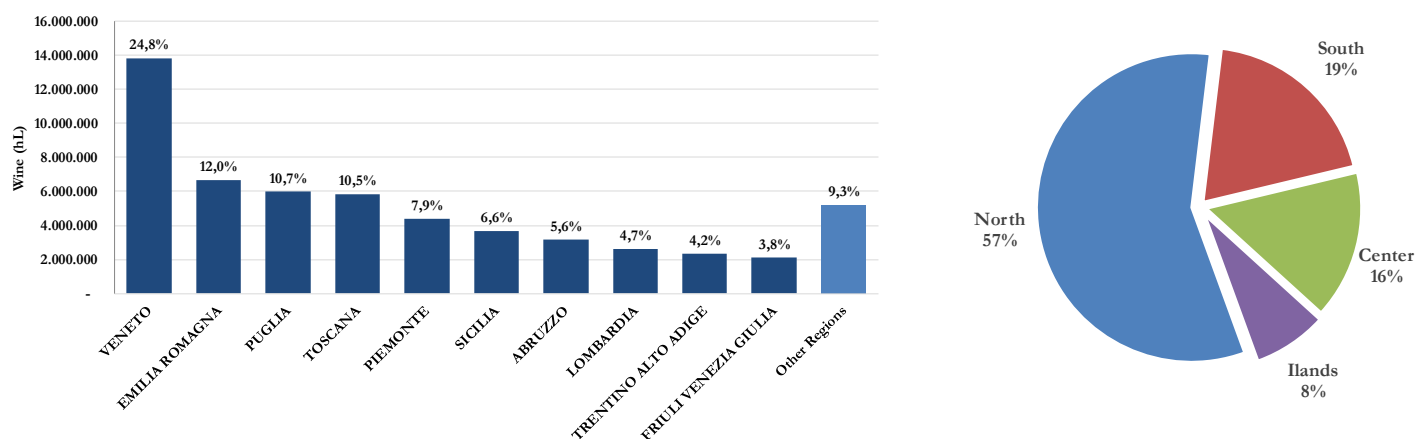


Table 2. Wine stocks by Region and category

Region	PDO wines (hL)	PGI wines (hL)	Other wines (hL)	Varietal wines (hL)	Total_Wines (hL)
VENETO	8.895.524	3.262.864	1.438.042	236.814	13.833.245
EMILIA ROMAGNA	1.408.180	1.901.935	3.277.059	105.029	6.692.204
PUGLIA	978.733	2.761.506	2.184.848	60.750	5.985.837
TOSCANA	3.717.450	1.685.823	429.652	9.594	5.842.520
PIEMONTE	3.136.067	203.873	959.268	91.913	4.391.121
SICILIA	1.673.404	1.451.603	547.262	10.237	3.682.507
ABRUZZO	1.754.807	587.095	729.397	76.091	3.147.390
LOMBARDIA	1.501.862	608.331	476.205	56.421	2.642.819
TRENTINO ALTO ADIGE	1.757.464	420.413	142.455	16.310	2.336.642
FRIULI VENEZIA GIULIA	1.392.407	431.986	247.773	42.314	2.114.480
CAMPANIA	526.191	314.544	286.867	2.154	1.129.756
LAZIO	384.074	408.964	293.073	4.765	1.090.876
MARCHE	572.730	285.578	213.824	14.875	1.087.007
UMBRIA	306.952	285.356	44.665	2.832	639.804
SARDEGNA	365.548	104.477	139.988	3.670	613.682
CALABRIA	69.568	73.724	47.405	890	191.587
MOLISE	58.770	36.135	84.954	3.624	183.484
BASILICATA	98.553	47.273	23.936	526	170.289
LIGURIA	39.210	7.662	17.800	256	64.928
VALLE D'AOSTA	20.587	9	5.938	5	26.539
ITALY	28.658.082	14.879.153	11.590.411	739.072	55.866.718

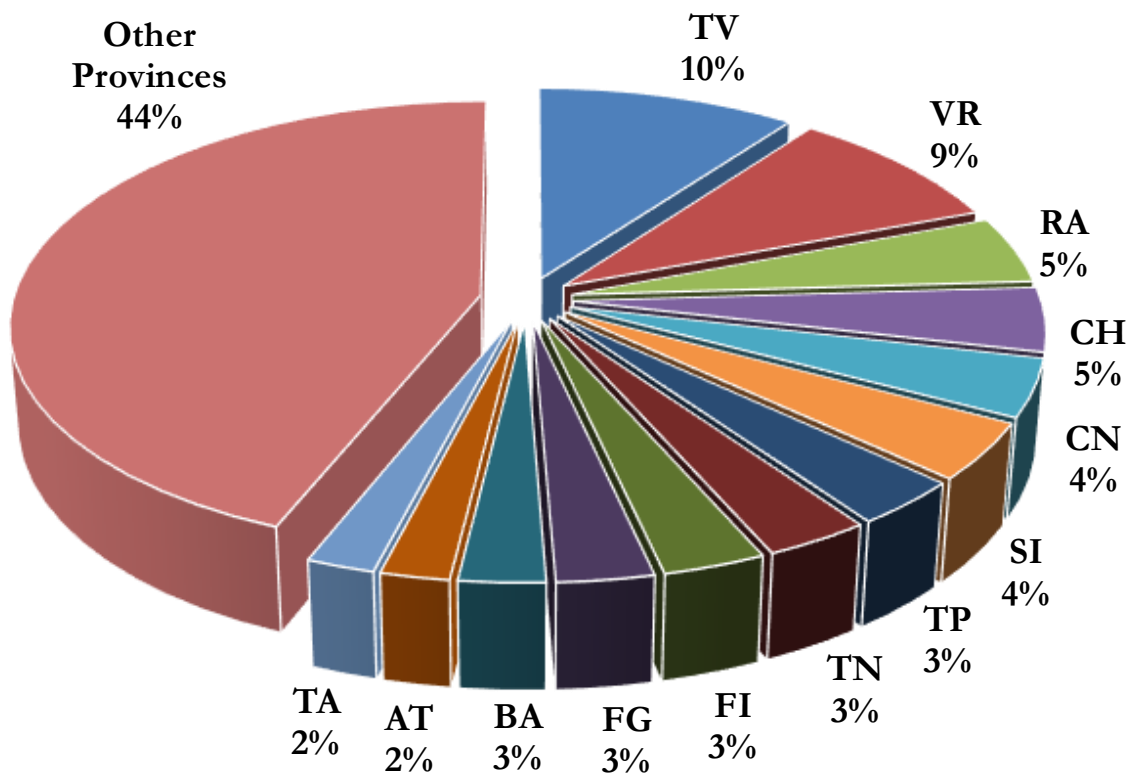
Table 4. Wine stocks by geographical area and category

Geographical area	PDO wines (hL)	PGI wines (hL)	Other wines (hL)	Varietal wines (hL)	Total_Wines (hL)
North	18.151.301	6.837.074	6.564.541	549.062	32.101.979
South	3.486.623	3.820.278	3.357.406	144.037	10.808.343
Center	4.981.206	2.665.721	981.213	32.067	8.660.207
Island	2.038.952	1.556.080	687.250	13.907	4.296.189
ITALY	28.658.082	14.879.153	11.590.411	739.072	55.866.718
Valori percentuali					
Geographical area	PDO wines (%)	PGI wines (%)	Other wines (%)	Varietal wines (%)	Total_Wines (%)
North	63,3	46,0	56,6	74,3	57,5
South	12,2	25,7	29,0	19,5	19,3
Center	17,4	17,9	8,5	4,3	15,5
Island	7,1	10,5	5,9	1,9	7,7
ITALY	100,0	100,0	100,0	100,0	100,0

Table 5. Wine stocks by Province and category

	Province	PDO wines (hL)	PGI wines (hL)	Other wines (hL)	Varietal wines (hL)	Total_Wines (hL)
1	Treviso	3.930.953	1.111.047	579.686	62.333	5.684.019
2	Verona	3.311.990	1.220.243	427.124	89.940	5.049.298
3	Ravenna	106.754	591.176	1.945.109	42.826	2.685.865
4	Chieti	1.340.357	507.400	644.844	71.875	2.564.475
5	Cuneo	1.803.598	141.946	318.877	45.489	2.309.910
6	Siena	1.669.955	501.590	120.303	1.950	2.293.798
7	Trapani	819.164	710.547	319.530	2.894	1.852.135
8	Trento	1.310.950	348.222	96.086	15.168	1.770.425
9	Firenze	1.118.068	456.459	152.932	1.894	1.729.352
10	Foggia	23.347	598.956	970.771	40.045	1.633.120
11	Bari	98.873	534.034	810.863	5.749	1.449.519
12	Asti	739.242	43.291	342.405	35.839	1.160.777
13	Taranto	457.578	605.098	81.516	5.312	1.149.503
14	Brindisi	238.550	651.650	248.079	3.766	1.142.046
15	Vicenza	603.717	376.736	120.961	39.462	1.140.877
16	Pavia	480.044	375.395	170.660	34.859	1.060.957
17	Venezia	645.411	294.986	103.376	9.460	1.053.232
18	Reggio Emilia	205.640	440.942	342.290	11.571	1.000.443
19	Forlì - Cesena	236.266	376.723	363.779	18.887	995.655
20	Brescia	784.716	39.464	110.510	7.431	942.121
21	Padova	399.408	257.424	204.429	35.527	896.787
22	Pordenone	615.073	182.462	75.307	14.941	887.783
23	Udine	556.641	160.569	136.594	22.158	875.962
24	Agrigento	319.369	424.326	74.991	951	819.636
25	Modena	471.490	206.413	117.343	7.353	802.600
	<i>Other Provinces</i>	<i>6.370.930</i>	<i>3.722.056</i>	<i>2.712.045</i>	<i>111.391</i>	<i>12.916.422</i>
	ITALY	28.658.082	14.879.153	11.590.411	739.072	55.866.718

Wine stocks by Province



NB; The allocation of the Regions in the geographical areas follows the ISTAT scheme: North: Piedmont, Valle d'Aosta, Liguria, Lombardy, Trentino-Alto Adige, Veneto, Friuli - Venezia Giulia, Emilia-Romagna; Center: Tuscany, Umbria, Marche, Lazio; South: Abruzzo, Molise, Campania, Puglia, Basilicata, Calabria; Islands: Sicily, Sardinia

Which wines in the wine cellar Italy?

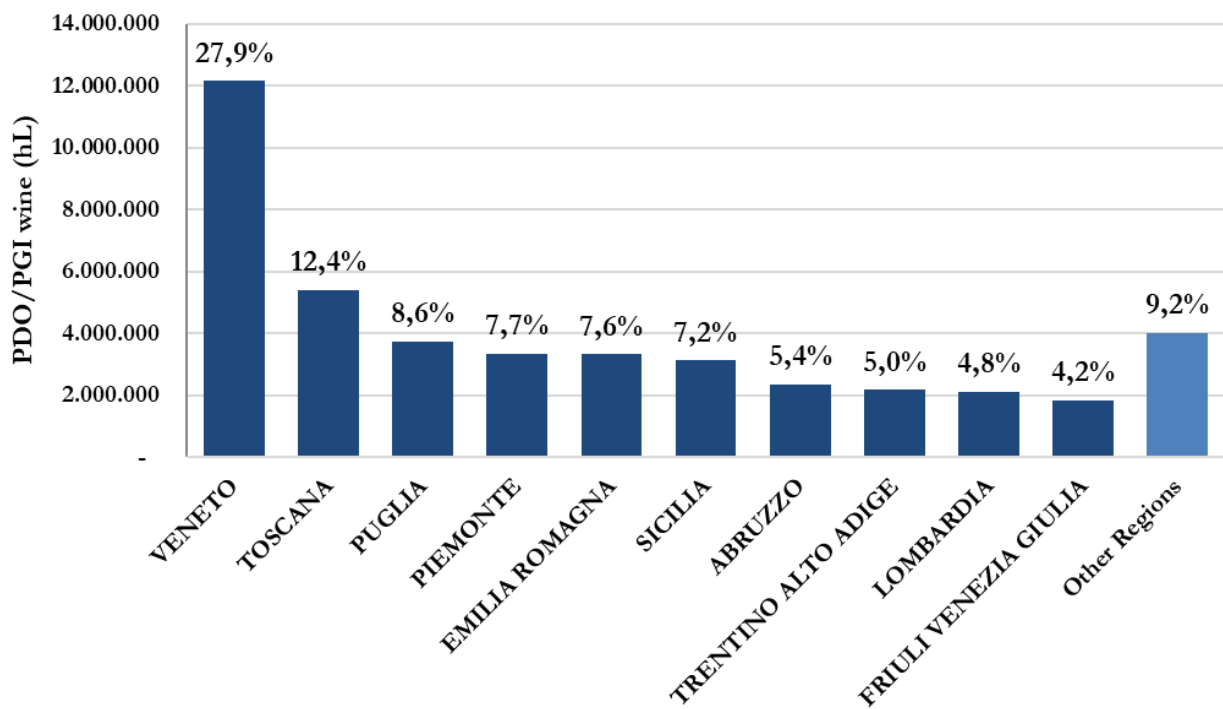
The 51.3% of the wine in stock is PDO, with a prevalence of red (51.7%). 26.6% of wine is PGI, again with a prevalence of red (54.6%), while the varietal wines stocks represent just 1.3% of the total. The remaining 20,7% consists of other wines.

Despite the large number of GIs present (526), 10 names represent the 40.6% of the total GI wines stocks; the first 20 names represent more than half of the total GI (56.7%).

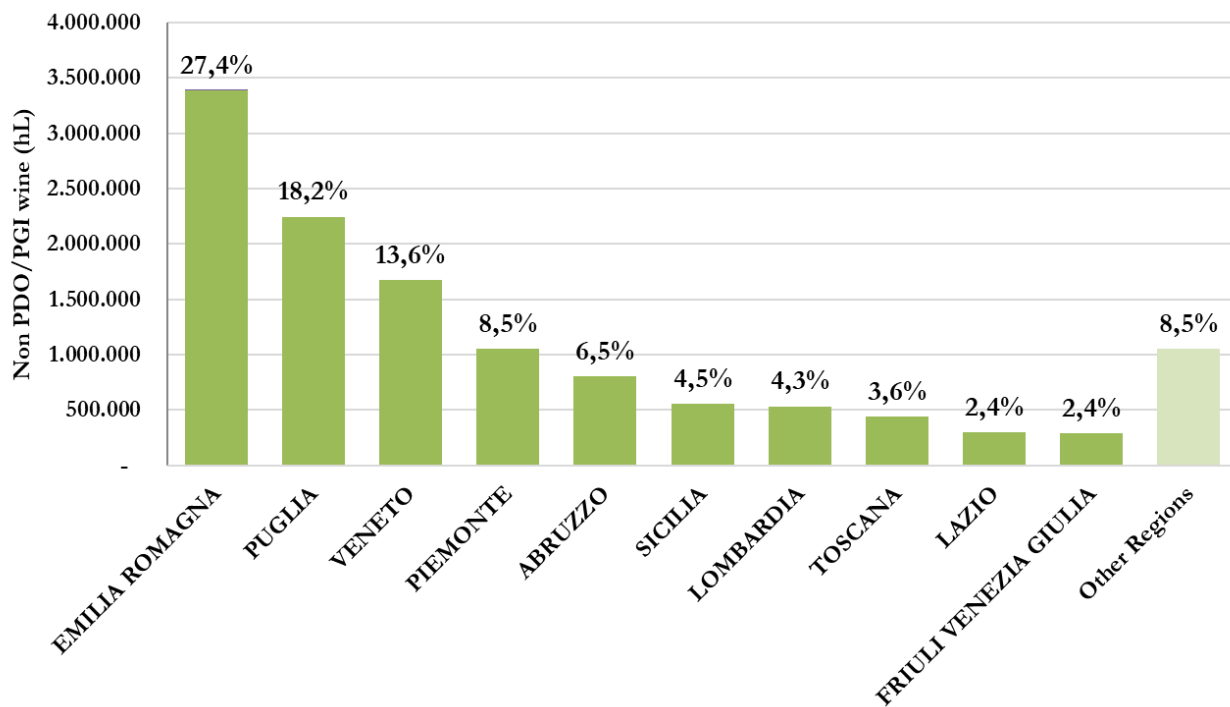
Table 6. PDO and PGI wines stocks in Italy

		hectolitres	%
1	PROSECCO	3.855.739	8,9
2	PUGLIA	1.777.213	4,1
3	TOSCANO O TOSCANA	1.602.400	3,7
4	TERRE SICILIANE	1.601.269	3,7
5	SICILIA	1.582.004	3,6
6	VENETO	1.530.140	3,5
7	DELLE VENEZIE	1.513.484	3,5
8	MONTEPULCIANO D'ABRUZZO	1.482.118	3,4
9	CHIANTI	1.399.175	3,2
10	SALENTO	1.336.776	3,1
11	RUBICONE	1.079.839	2,5
12	CHIANTI CLASSICO	851.033	2,0
13	CONEGLIANO VALDOBBIADENE PROSECCO	845.188	1,9
14	PROVINCIA DI VERONA O VERONESE	726.426	1,7
15	EMILIA O DELL' EMILIA	718.703	1,7
16	TRE VENEZIE	584.484	1,3
17	VALPOLICELLA RIPASSO	568.369	1,3
18	TRENTINO	556.903	1,3
19	FRANCIACORTA	552.699	1,3
20	BAROLO	532.955	1,2
	<i>Other PDO/PGI</i>	<i>18.840.320</i>	<i>43,3</i>
	Total PDO/PGI	43.537.235	100,0

PDO/PGI wines stocks by Region



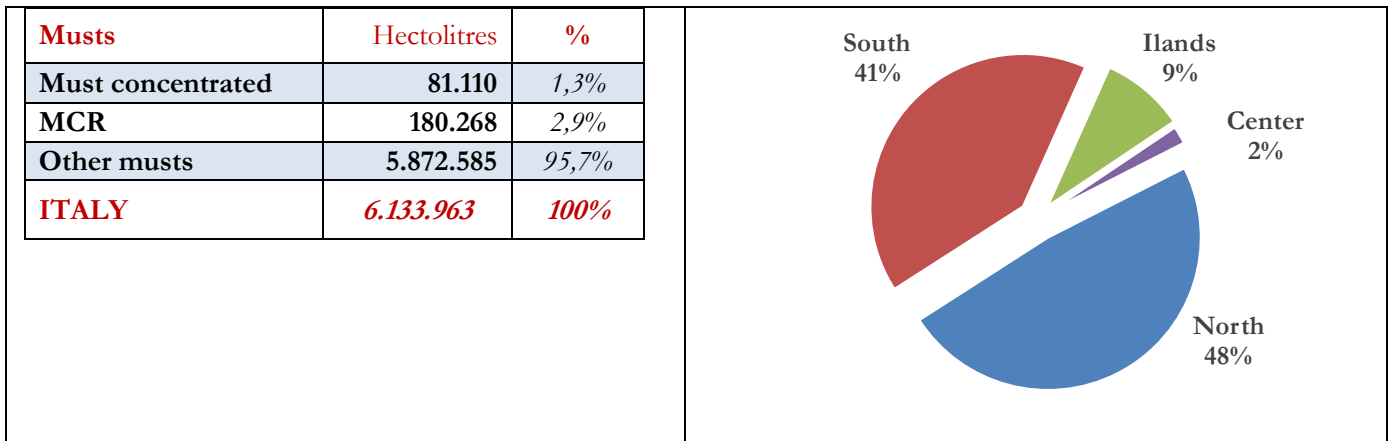
Other wines stocks by Region



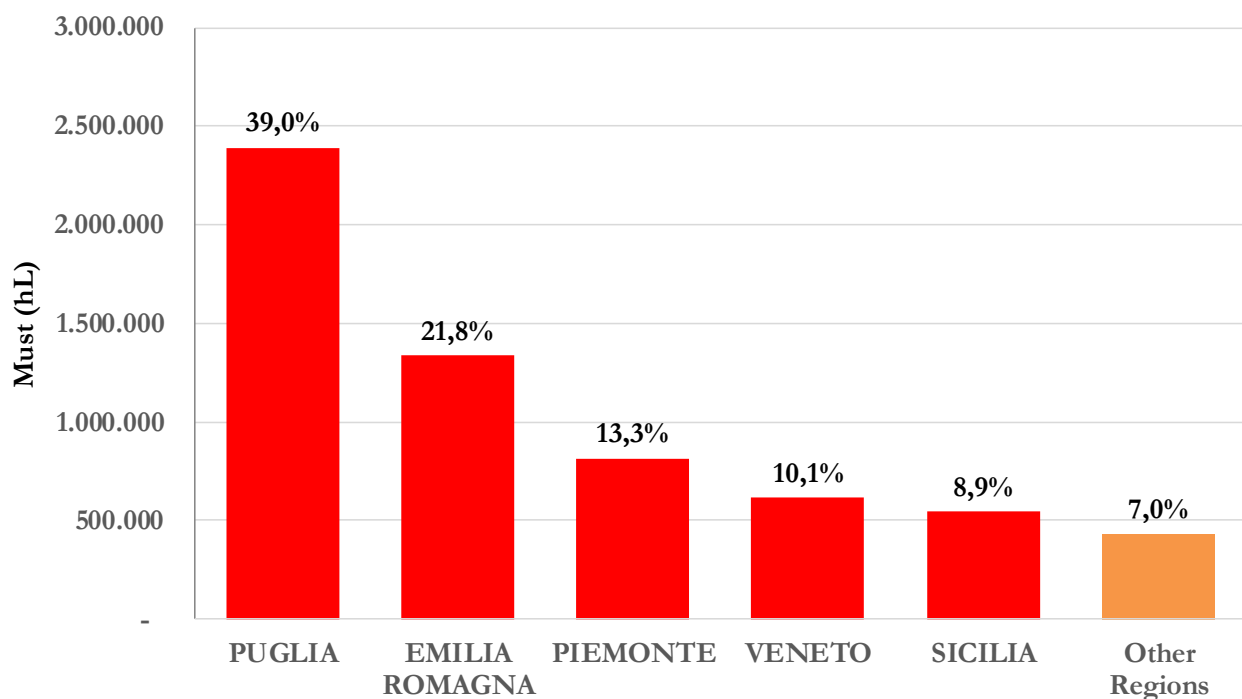
3. MUSTS stocked in Italy as of March 15, 2020

Most of the musts are stocked in the northern (48%) and southern (41%) regions of Italy. The first must-holding Region is Puglia (39.0%), followed by Emilia Romagna (21.8%).

Table 8. Must stocks in Italy by category and geographical area



Musts stocks by Region



4. New Wine Still in Fermentation stocked in Italy as of March 15, 2020

The new wines still in fermentation are 314,556 hectolitres, allocated as follow: 32.7% in the central regions, 29.9% in the South, 26.8% in the North and the remaining 10.6% in the Islands.

5. Stocks 15th March 2020 vs 15th March 2019

Tabella 9. Difference in wine products stocks compared to the same period of the previous year.

Data in hectolitres

WINES	15/03/2020	15/03/2019	2020 vs 2019
PDO wines	28.658.082	28.575.040	0,3%
<i>white</i>	13.373.940	13.655.981	-2,1%
<i>rosé</i>	456.348	460.530	-0,9%
<i>red</i>	14.827.794	14.458.530	2,6%
PGI wines	14.879.153	14.875.054	0,0%
<i>white</i>	6.176.404	6.112.019	1,1%
<i>rosé</i>	579.036	571.752	1,3%
<i>red</i>	8.123.712	8.191.283	-0,8%
Varietal wines	739.072	895.270	-17,4%
Other wines	11.590.411	13.193.015	-12,1%
ITALY	55.866.718	57.538.379	-2,9%
MUSTS			
	15/03/2020	15/03/2019	2020 vs 2019
Must concentrated	81.110	94.375	-14,1%
MCR	180.268	170.318	5,8%
Other musts	5.872.585	6.628.428	-11,4%
ITALY	6.133.963	6.893.121	-11,0%
New wine still in fermentation			
	15/03/2020	15/03/2019	2020 vs 2019
ITALY	314.556	490.065	-35,8%