



ministero delle  
politiche agricole  
alimentari e forestali

DEPARTMENT OF CENTRAL INSPECTORATE FOR FRAUD  
REPRESSION AND QUALITY PROTECTION OF THE AGRI-  
FOOD PRODUCTS AND FOODSTAFFS

**ICQRF**

# **WINE CELLAR ITALY**

**Update of 21 May 2020**

**Wines, musts, GIs stocked in Italy by operators  
obliged to keep the wine computerized register**

*report no. 13/2020*

*published at the webpage: [www.politicheagricole.it](http://www.politicheagricole.it)*



## **Wine cellar Italy at 21 May 2020**

The Report is drawn up by the ICQRF on data recorded in the wine computerized registers.

The database contains detailed information related to over **650 thousand wine vessels, 17,000 producers and records about 30 million wine operations annually**. ICQRF estimates that the database contains at least 95% of wine and must held in Italy.

**Wines: 49.5 million hectolitres. Compared to the past 14 May a 1.5% decrease was recorded (-742.408 hectoliters). The stocks are 3.5% lower compared to 15 May 2019.**

## **1. Summary**

On 21 May 2020, in Italian oenological premises, there were 49.5 million hectolitres of wine, 5.0 million hectolitres of musts and 145,510 hectolitres of new wine still in fermentation. Compared to the stocks recorded on 15 May 2019, a general reduction was observed: 3.5% for wines, 11.2% for musts and a 25.2% for new wine still in fermentation (Table 7). A reduction was observed compared to stocks recorded on 14 May 2020: -1.5% for wines, -0.7% for musts, and -3.7% for new wine still in fermentation (Table 8).

Almost the 58% of wine in Italy is physically stocked in the northern regions. In Veneto, there is almost a quarter of the national wine, thanks to the significant effect of stocks in the provinces of Treviso (10%) and Verona (9%). These two provinces hold more wine (9.6 million hectolitres) than Puglia and Sicily together (8.0 million hectolitres).

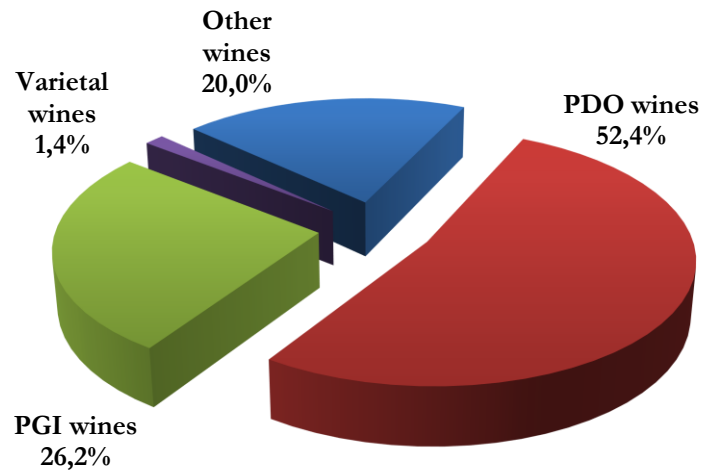
The 52.4% of the wine in stock is PDO, with a prevalence of red (53.1%). 26.2% of wine is PGI, again with a prevalence of red (55.8%), while the varietal wines stocks represent just 1.4% of the total. The remaining 20,0% consists of other wines.

Despite the large number of GIs present (526), 10 names represent the 40.0% of the total GI wines stocks; the first 20 names represent more than half of the total GI (56.2%).

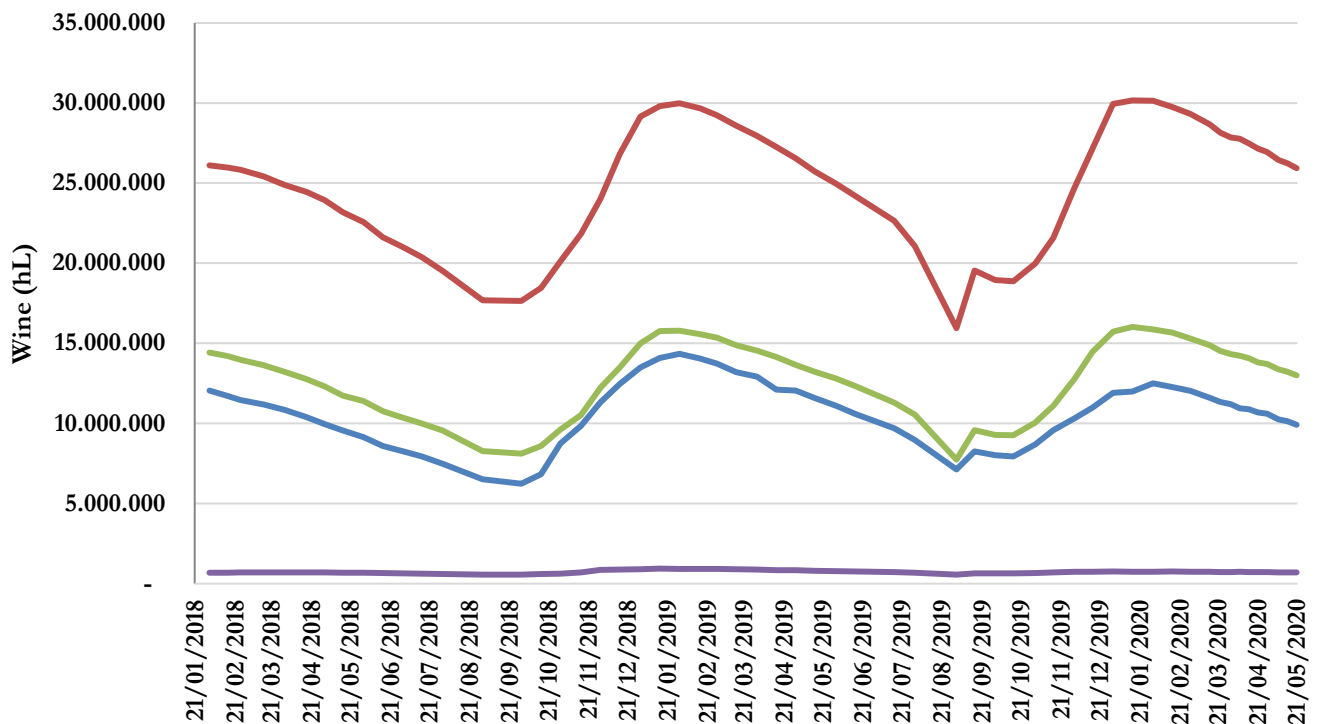
## 2. Wine stocked in Italy as of 21 May 2020

**Table 1. Wine stocks in Italy by category and colour**

WINES	hectolitres	%
<b>PDO wines</b>	<b>25.920.792</b>	<b>52,4</b>
<i>white</i>	11.728.372	23,7
<i>rosé</i>	416.604	0,8
<i>red</i>	13.775.816	27,8
<b>PGI wines</b>	<b>12.988.423</b>	<b>26,2</b>
<i>white</i>	5.228.348	10,6
<i>rosé</i>	517.185	1,0
<i>red</i>	7.242.890	14,6
Varietal wines	689.955	1,4
Other wines	9.912.899	20,0
<b>ITALY</b>	<b>49.512.069</b>	<b>100</b>



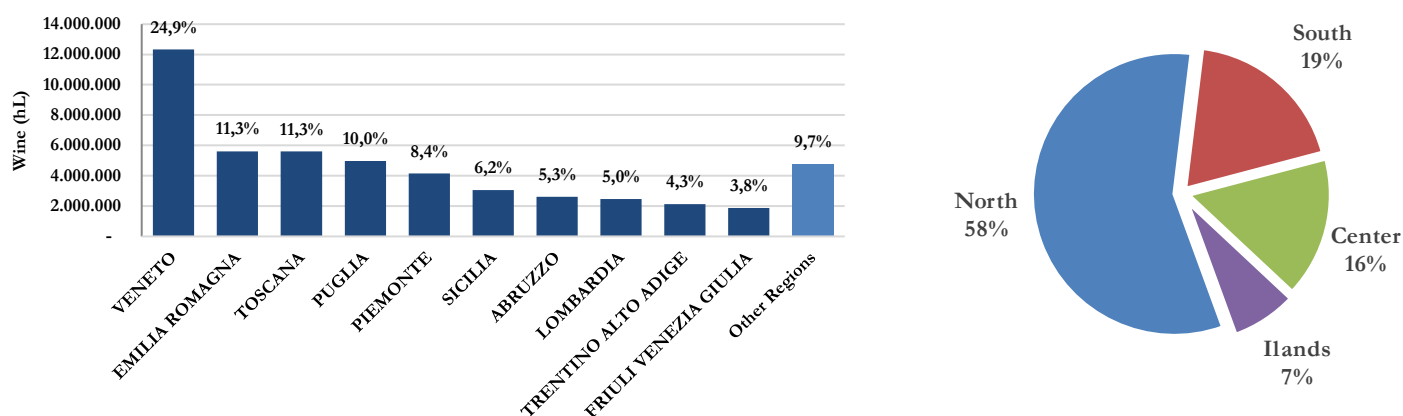
**Figure 1. Trend of the wine stocks by category: 1 February 2018 – 21 May 2020**



## Where is physically stocked the wine in Italy?

Almost the 58% of wine in Italy is physically stocked in the northern regions. In Veneto, there is almost a quarter of the national wine, thanks to the significant effect of stocks in the provinces of Treviso (10%) and Verona (9%). These two provinces hold more wine (9.6 million hectolitres) than Puglia and Sicily together (8.0 million hectolitres).

**Figure 2. Wine stocks by Region and Geographical Area**



**Table 2. Wine stocks by Region and category**

Region	PDO wines (hL)	PGI wines (hL)	Other wines (hL)	Varietal wines (hL)	Total_Wines (hL)
<b>VENETO</b>	7.875.317	2.862.285	1.358.543	223.606	12.319.751
<b>EMILIA ROMAGNA</b>	1.245.295	1.586.284	2.678.356	96.810	5.606.746
<b>TOSCANA</b>	3.550.069	1.621.248	412.317	10.207	5.593.841
<b>PUGLIA</b>	901.421	2.317.082	1.693.478	49.980	4.961.961
<b>PIEMONTE</b>	2.932.334	209.367	904.102	94.900	4.140.704
<b>SICILIA</b>	1.439.419	1.183.366	425.132	9.461	3.057.378
<b>ABRUZZO</b>	1.510.773	486.358	548.458	64.033	2.609.622
<b>LOMBARDIA</b>	1.424.170	533.053	438.136	57.205	2.452.564
<b>TRENTINO ALTO ADIGE</b>	1.576.978	379.436	140.324	16.178	2.112.916
<b>FRIULI VENEZIA GIULIA</b>	1.214.518	379.524	239.174	40.541	1.873.758
<b>CAMPANIA</b>	507.605	302.526	277.200	1.749	1.089.081
<b>MARCHE</b>	518.927	258.209	197.139	12.894	987.169
<b>LAZIO</b>	333.781	364.883	261.034	2.773	962.472
<b>UMBRIA</b>	287.182	254.651	41.434	2.315	585.581
<b>SARDEGNA</b>	333.365	97.370	133.136	3.364	567.235
<b>CALABRIA</b>	66.048	70.516	46.006	773	183.342
<b>MOLISE</b>	57.048	31.799	71.947	2.377	163.170
<b>BASILICATA</b>	90.410	42.962	23.632	525	157.528
<b>LIGURIA</b>	36.306	7.496	17.372	260	61.435
<b>VALLE D'AOSTA</b>	19.827	7	5.976	5	25.815
<b>ITALY</b>	<b>25.920.792</b>	<b>12.988.423</b>	<b>9.912.899</b>	<b>689.955</b>	<b>49.512.069</b>

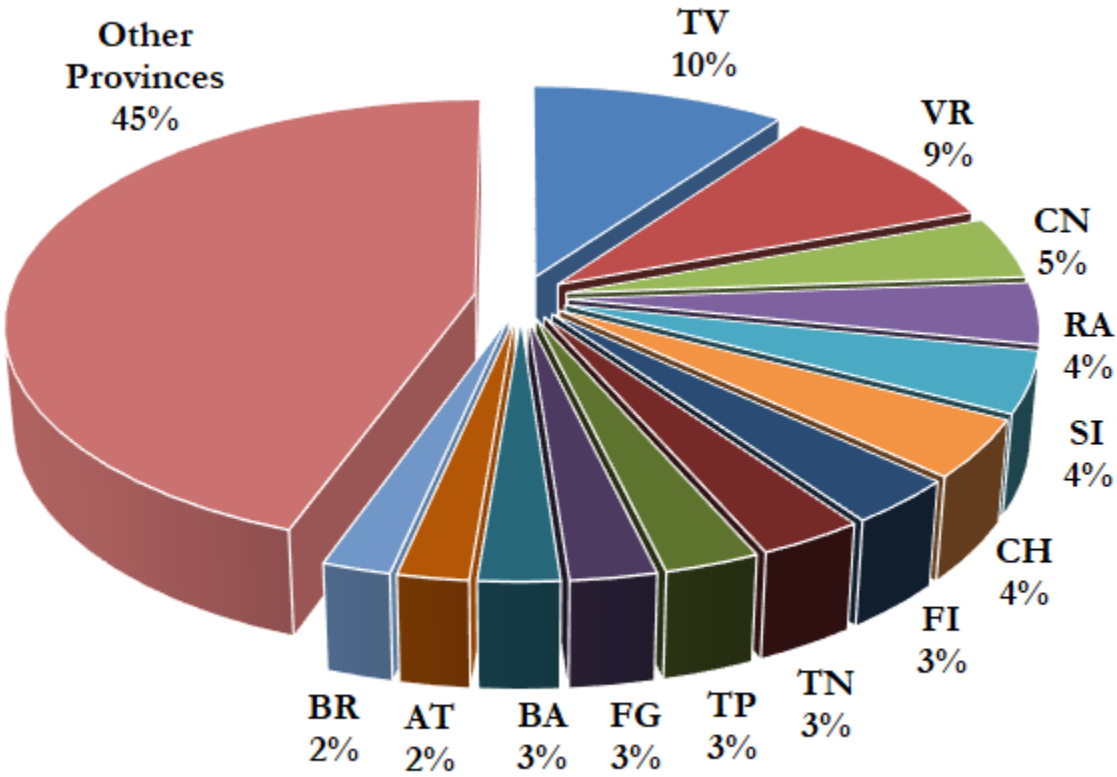
**Table 3. Wine stocks by geographical area and category**

Geographical area	PDO wines (hL)	PGI wines (hL)	Other wines (hL)	Varietal wines (hL)	Total_Wines (hL)
North	16.324.745	5.957.453	5.781.985	529.505	28.593.688
South	3.133.305	3.251.243	2.660.722	119.436	9.164.705
Center	4.689.959	2.498.991	911.924	28.189	8.129.063
Island	1.772.784	1.280.736	558.269	12.825	3.624.613
<b>ITALY</b>	<b>25.920.792</b>	<b>12.988.423</b>	<b>9.912.899</b>	<b>689.955</b>	<b>49.512.069</b>
<b>Valori percentuali</b>					
Geographical area	PDO wines (%)	PGI wines (%)	Other wines (%)	Varietal wines (%)	Total_Wines (%)
North	63,0	45,9	58,3	76,7	57,8
South	12,1	25,0	26,8	17,3	18,5
Center	18,1	19,2	9,2	4,1	16,4
Island	6,8	9,9	5,6	1,9	7,3
<b>ITALY</b>	<b>100,0</b>	<b>100,0</b>	<b>100,0</b>	<b>100,0</b>	<b>100,0</b>

**Table 4. Wine stocks by Province and category**

	Province	PDO wines (hL)	PGI wines (hL)	Other wines (hL)	Varietal wines (hL)	Total_Wines (hL)
1	Treviso	3.416.020	937.603	563.112	58.901	4.975.636
2	Verona	3.015.701	1.105.535	394.352	86.727	4.602.314
3	Cuneo	1.722.749	148.988	312.454	47.101	2.231.292
4	Siena	1.592.995	469.879	118.825	1.889	2.183.587
5	Ravenna	92.501	466.225	1.546.714	37.514	2.142.954
6	Chieti	1.126.232	413.065	474.827	59.920	2.074.044
7	Firenze	1.080.378	445.718	145.490	1.950	1.673.536
8	Trento	1.155.692	314.310	93.344	14.349	1.577.694
9	Trapani	665.091	521.328	221.969	759	1.409.148
10	Bari	97.051	463.074	628.476	5.355	1.193.955
11	Foggia	23.357	484.126	651.417	31.733	1.190.634
12	Asti	675.549	39.533	312.234	36.358	1.063.674
13	Brindisi	215.743	554.006	247.610	6.007	1.023.367
14	Vicenza	538.942	325.991	110.578	34.652	1.010.163
15	Taranto	414.878	480.681	74.602	3.942	974.103
16	Pavia	428.190	319.688	159.634	35.421	942.933
17	Venezia	556.863	260.288	101.854	10.590	929.594
18	Brescia	763.064	38.284	109.606	7.677	918.632
19	Forlì - Cesena	229.236	328.220	324.146	16.959	898.562
20	Reggio Emilia	167.320	373.259	274.034	11.282	825.895
21	Padova	343.928	230.602	186.502	32.656	793.688
22	Udine	490.035	139.048	135.445	21.208	785.736
23	Pordenone	521.071	159.011	68.734	13.631	762.447
24	Modena	409.844	176.188	111.438	7.553	705.023
25	Agrigento	273.715	360.332	68.531	901	703.479
	<i>Other Provinces</i>	<i>5.904.647</i>	<i>3.433.441</i>	<i>2.476.969</i>	<i>104.921</i>	<i>11.919.979</i>
	<b>ITALY</b>	<b>25.920.792</b>	<b>12.988.423</b>	<b>9.912.899</b>	<b>689.955</b>	<b>49.512.069</b>

**Figure 3. Wine stocks by Province**



**NB;** The allocation of the Regions in the geographical areas follows the ISTAT scheme: North: Piedmont, Valle d'Aosta, Liguria, Lombardy, Trentino-Alto Adige, Veneto, Friuli - Venezia Giulia, Emilia-Romagna; Center: Tuscany, Umbria, Marche, Lazio; South: Abruzzo, Molise, Campania, Puglia, Basilicata, Calabria; Islands: Sicily, Sardinia

## Which wines in the wine cellar Italy?

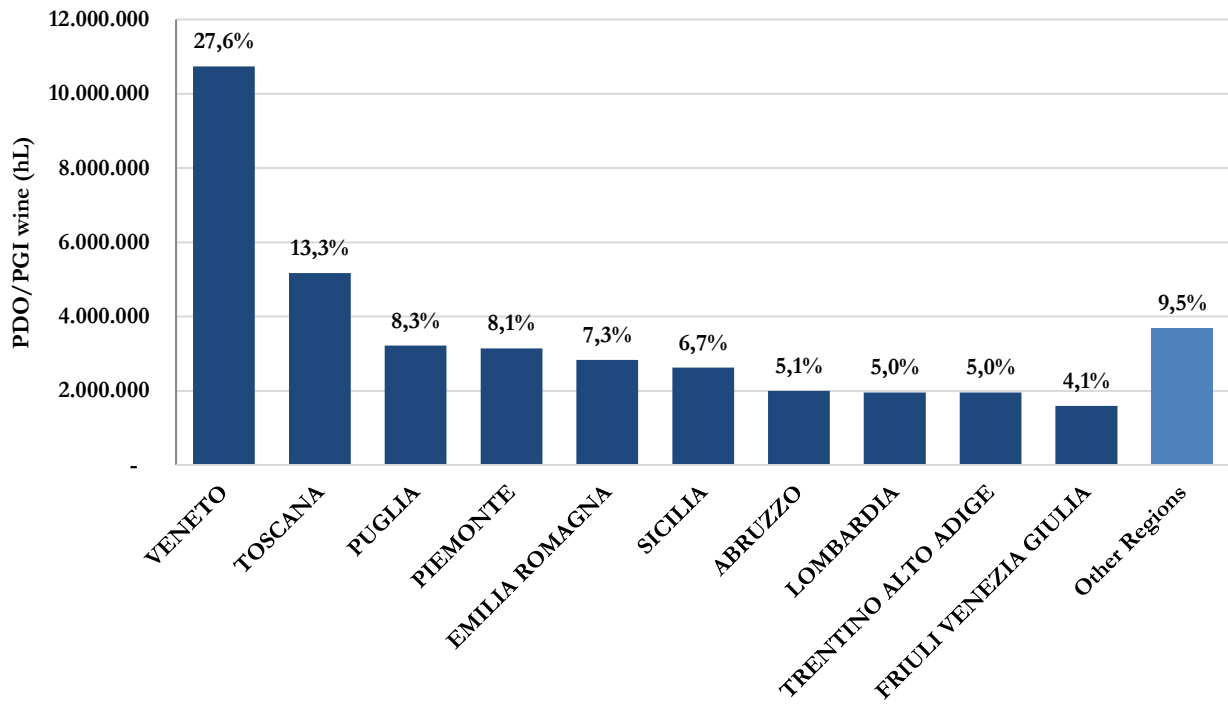
The 52.4% of the wine in stock is PDO, with a prevalence of red (53.1%). 26.2% of wine is PGI, again with a prevalence of red (55.8%), while the varietal wines stocks represent just 1.4% of the total. The remaining 20,0% consists of other wines.

Despite the large number of GIs present (526), 10 names represent the 40.0% of the total GI wines stocks; the first 20 names represent more than half of the total GI (56.2%).

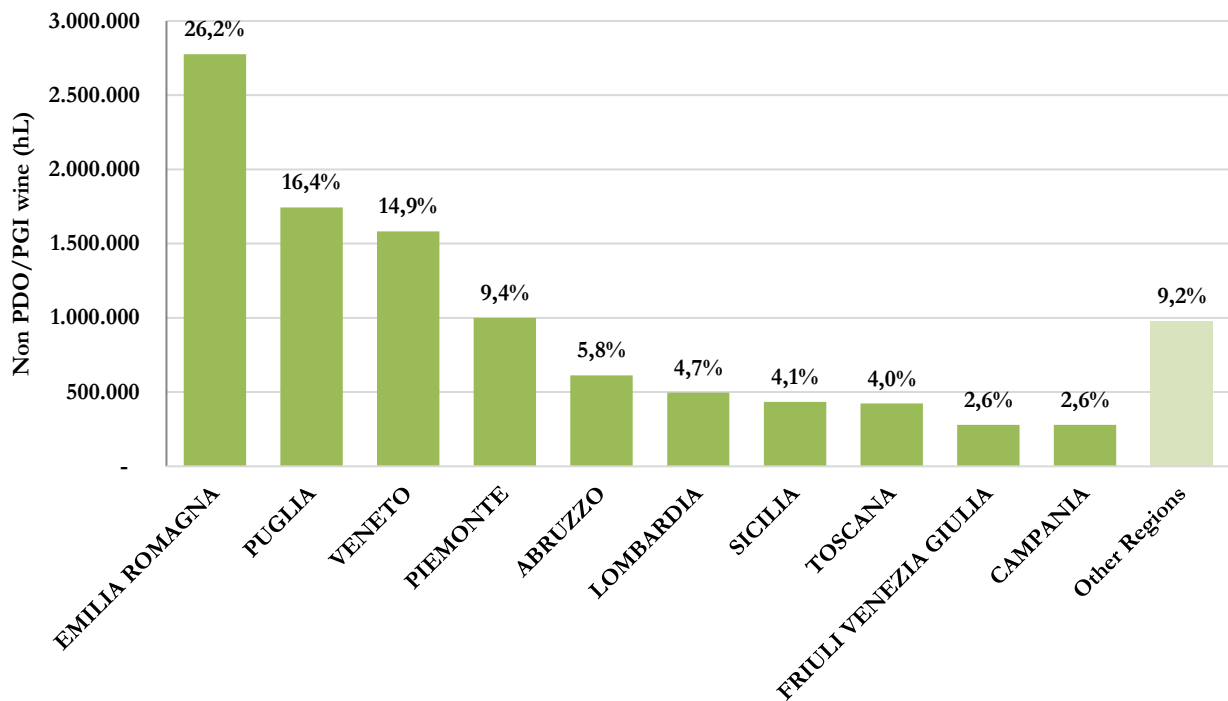
**Table 5. PDO and PGI wines stocks in Italy**

		hectolitres	%
1	PROSECCO	3.387.032	8,7
2	PUGLIA	1.536.132	3,9
3	TOSCANO O TOSCANA	1.529.174	3,9
4	SICILIA	1.376.557	3,5
5	TERRE SICILIANE	1.362.799	3,5
6	VENETO	1.333.724	3,4
7	MONTEPULCIANO D'ABRUZZO	1.319.786	3,4
8	CHIANTI	1.315.071	3,4
9	DELLE VENEZIE	1.264.369	3,2
10	SALENTO	1.138.218	2,9
11	RUBICONE	885.178	2,3
12	CHIANTI CLASSICO	825.840	2,1
13	CONEGLIANO VALDOBBIADENE PROSECCO	756.444	1,9
14	PROVINCIA DI VERONA O VERONESE	631.501	1,6
15	EMILIA O DELL' EMILIA	603.124	1,6
16	VALPOLICELLA RIPASSO	562.846	1,4
17	FRANCIACORTA	541.413	1,4
18	BAROLO	520.525	1,3
19	TRE VENEZIE	505.596	1,3
20	PRIMITIVO DI MANDURIA	476.271	1,2
	<i>Other PDO/PGI</i>	<i>17.037.612</i>	<i>43,8</i>
	<b>Total PDO/PGI</b>	<b>38.909.215</b>	<b>100,0</b>

**Figure 4. PDO/PGI wines stocks by Region**



**Figure 5. Other wines stocks by Region**



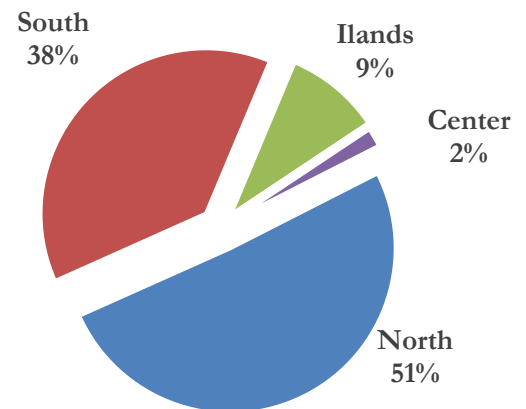


### 3. MUSTS stocked in Italy as of 21 May 2020

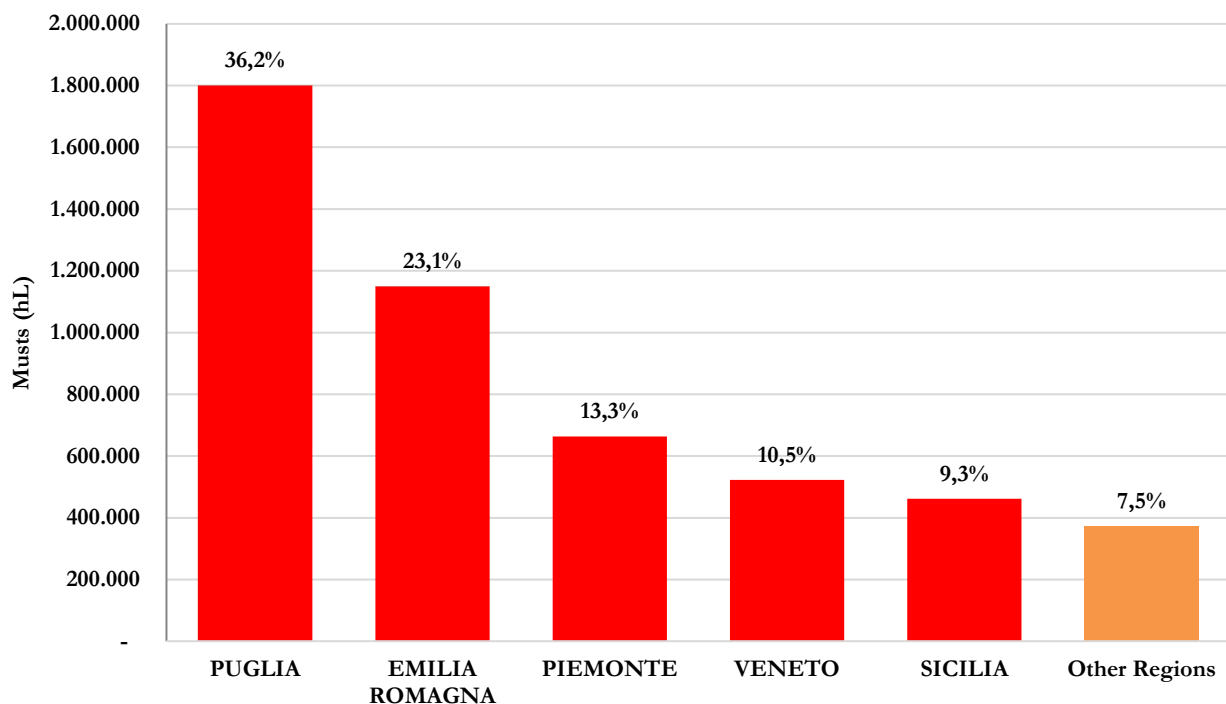
Most of the musts are stocked in the northern (51%) and southern (38%) regions of Italy. The top Region is Puglia (36.2%), followed by Emilia Romagna (23.1%).

**Table 6. Must stocks in Italy by category and geographical area**

Musts	hectolitres	%
Must concentrated	82.307	1,7%
MCR	196.688	4,0%
Other musts	4.690.958	94,4%
<b>ITALY</b>	<b>4.969.953</b>	<b>100%</b>



**Figure 6. Musts stocks by Region**



### 4. New Wine Still in Fermentation stocked in Italy as of 21 May 2020

The new wines still in fermentation are 145,510 hectolitres, distributed as follow: 32.7% in the South, 28.9% in the central regions, 27.5% in the North, and the remaining 10.9% in the Islands.

## 5. Stocks 21 May 2020 vs. 15 May 2019

Table 7. Difference in wine products stocks compared to the same period of the last year. Data in hectolitres

<b>WINES</b>	<b>21/05/2020</b>	<b>15/05/2019</b>	<b>2020 vs 2019</b>
<b>PDO wines</b>	<b>25.920.792</b>	<b>25.715.401</b>	<b>0,8%</b>
<i>white</i>	11.728.372	11.837.570	-0,9%
<i>rosé</i>	416.604	406.778	2,4%
<i>red</i>	13.775.816	13.471.053	2,3%
<b>PGI wines</b>	<b>12.988.423</b>	<b>13.219.781</b>	<b>-1,8%</b>
<i>white</i>	5.228.348	5.281.395	-1,0%
<i>rosé</i>	517.185	510.023	1,4%
<i>red</i>	7.242.890	7.428.364	-2,5%
<b>Varietal wines</b>	<b>689.955</b>	<b>801.285</b>	<b>-13,9%</b>
<b>Other wines</b>	<b>9.912.899</b>	<b>11.577.766</b>	<b>-14,4%</b>
<b>ITALY</b>	<b>49.512.069</b>	<b>51.314.234</b>	<b>-3,5%</b>
<b>MUSTS</b>	<b>21/05/2020</b>	<b>15/05/2019</b>	<b>2020 vs 2019</b>
<b>Must concentrated</b>	82.307	78.503	4,8%
<b>MCR</b>	196.688	214.406	-8,3%
<b>Other musts</b>	4.690.958	5.302.024	-11,5%
<b>ITALY</b>	<b>4.969.953</b>	<b>5.594.934</b>	<b>-11,2%</b>
<b>New wine still in fermentation</b>	<b>21/05/2020</b>	<b>15/05/2019</b>	<b>2020 vs 2019</b>
<b>ITALY</b>	<b>145.510</b>	<b>194.644</b>	<b>-25,2%</b>

## 6. Stocks 21 May 2020 vs. 14 May 2020

Table 8. Difference in wine products stocks compared to the last data. Data in hectolitres

WINES	21/05/2020	14/05/2020	diff.
<b>PDO wines</b>	<b>25.920.792</b>	<b>26.217.612</b>	<b>-1,1%</b>
<i>white</i>	11.728.372	11.905.204	-1,5%
<i>rosé</i>	416.604	420.959	-1,0%
<i>red</i>	13.775.816	13.891.450	-0,8%
<b>PGI wines</b>	<b>12.988.423</b>	<b>13.209.054</b>	<b>-1,7%</b>
<i>white</i>	5.228.348	5.339.380	-2,1%
<i>rosé</i>	517.185	522.507	-1,0%
<i>red</i>	7.242.890	7.347.167	-1,4%
<b>Varietal wines</b>	<b>689.955</b>	<b>699.742</b>	<b>-1,4%</b>
<b>Other wines</b>	<b>9.912.899</b>	<b>10.128.069</b>	<b>-2,1%</b>
<b>ITALY</b>	<b>49.512.069</b>	<b>50.254.477</b>	<b>-1,5%</b>
<b>MUSTS</b>			
	<b>21/05/2020</b>	<b>14/05/2020</b>	<b>diff.</b>
<b>Must concentrated</b>	82.307	79.341	3,7%
<b>MCR</b>	196.688	193.385	1,7%
<b>Other musts</b>	4.690.958	4.731.559	-0,9%
<b>ITALY</b>	<b>4.969.953</b>	<b>5.004.285</b>	<b>-0,7%</b>
<b>New wine still in fermentation</b>			
	<b>21/05/2020</b>	<b>14/05/2020</b>	<b>diff.</b>
<b>ITALY</b>	<b>145.510</b>	<b>151.093</b>	<b>-3,7%</b>